



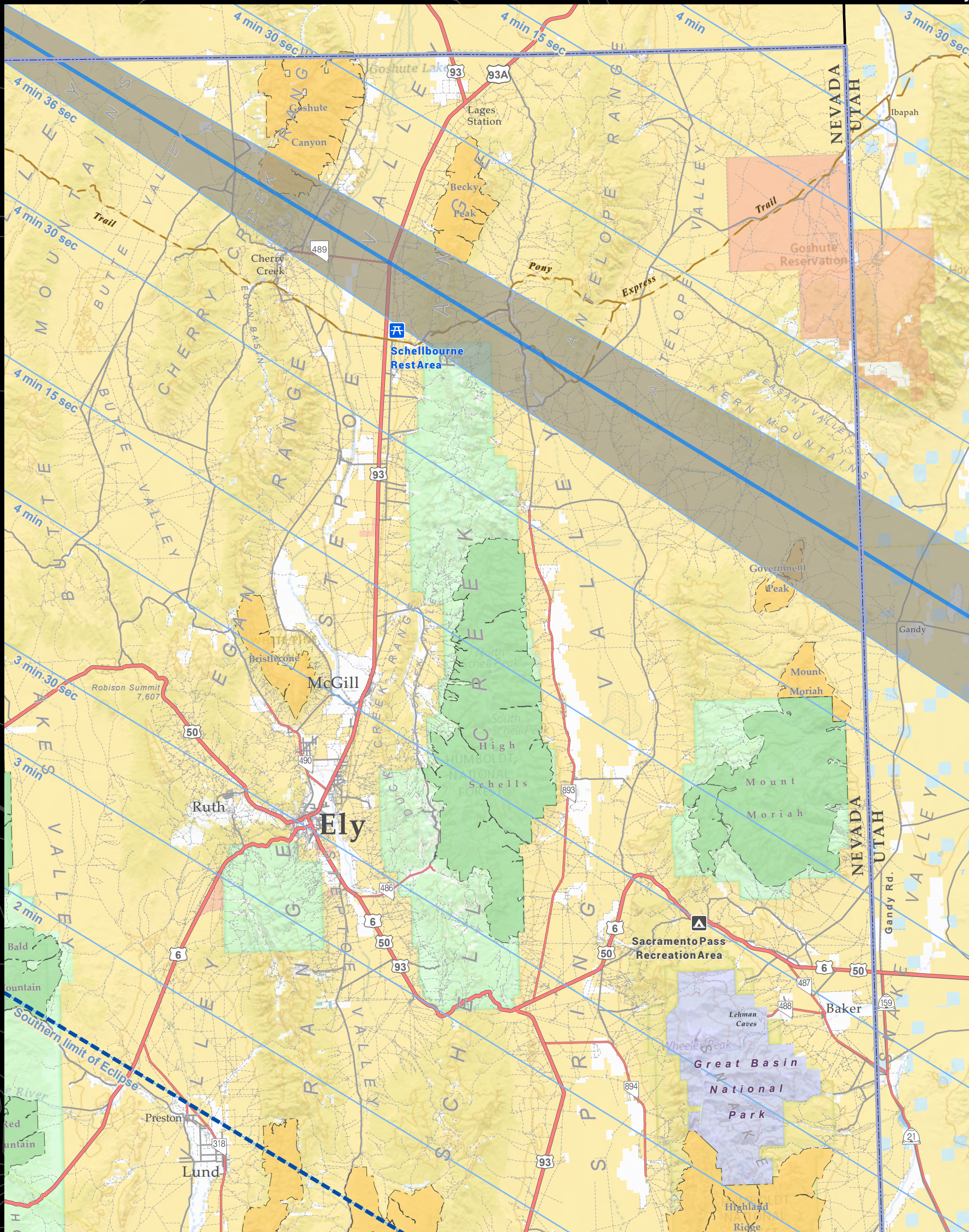
# Annular Solar Eclipse

## October 14, 2023

## White Pine County

### Bristlecone Field Office

Ely District BLM  
702 N. Industrial Way  
Ely, NV 89301  
(775)289-1800



### Where to View the Eclipse?

Are you looking for a good place to view the eclipse? You might consider viewing the eclipse from Ely or Baker, where you can be safely situated for a great viewing experience. However, if you are wanting to get closer to where the center of the eclipse can be viewed you will have some choices to make. This map was designed to help you make the right choice for where you should be driving to view the eclipse.



**Pavement- Highways, city streets.** Recommended SAFE for all vehicles. It is not recommended to pull off of busy highways onto the shoulder unless in an emergency. Our highways are quite busy and parking on the shoulder is unsafe for you and those passing on the highway. There are numerous dirt roads and pull outs situated along the highway that would provide a safer place to be than on the highway shoulder.

**Unpaved maintained- These roads are typically gravel roads that are maintained on a somewhat regular basis.** These roads are recommended for medium to higher clearance vehicles such as SUVs and trucks with all terrain tires or better. These roads are not recommended for low clearance vehicles with street tires.

**Dirt Roads- These roads are natural surface dirt roads which are not maintained, in poor condition, and deeply rutted.** These roads are recommended for high clearance 4WD vehicles with all terrain tires or better and those with backcountry driving skills. Dirt roads are not recommended for low clearance vehicles and street tires.

Just because there is a road depicted on a map or smartphone app does not mean it is safe to drive. Whether or not you should be driving on a backcountry dirt road, or if it is safe to drive, is entirely up to you.

While the BLM can warn people about dangers in the outdoors, such as isolation and physical hazards, people must assume responsibility for their own safety. Always let someone know your travel plans and when you will return. **Cellphone service is minimal to none.** Have emergency items with you: food, water, first aid, tools, spare tire, shovel, blanket, and fire extinguisher.

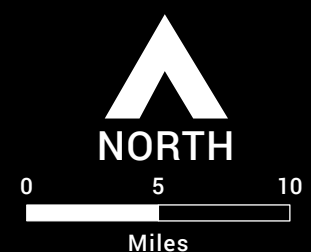
The areas of the map in white indicate private property. Please respect all **NO TRESPASSING** signs, stay on existing roads, slow down, and leave gates as you found them.

Scan QR Code or visit <https://elynevada.net/ring-of-fire-eclipse-festival/> to download this Georeferenced Map.



### Legend

- |                      |             |
|----------------------|-------------|
| Max Eclipse Duration | Land Status |
| Center of Eclipse    | USFS        |
| Edge of Eclipse      | NPS         |
| <b>Roads</b>         | BIA         |
| Paved                | State       |
| Unpaved Maintained   | Private     |
| Dirt                 |             |
| Pony Express Trail   |             |
| White Pine County    |             |
| BLM Wilderness       |             |
| USFS Wilderness      |             |
| BLM - WSA            |             |



No warranty is made by the Bureau of Land Management as to the accuracy, reliability, or completeness of these data for individual use or aggregate use with other data. Original data were compiled from various sources. This information may not meet National Map Accuracy Standards. This product was developed through digital means and may be updated without notification.

Map Produced by: EYDO GIS Staff

Date: 8/22/2023